



OFFICER
MEDIA GROUP

OFFICER.COM

OFFICER
THE OFFICIAL MEDIA GROUP OF THE POLICE OFFICERS ASSOCIATION

BASIC CRIME SCENE RECONSTRUCTION

Instructor: Private
Investigator, Hilary
Rodela



- ▶ What is crime scene reconstruction?
- ▶ Crime scene reconstruction is putting the pieces of a crime scene back together in order to potentially find out what happened when the crime took place.
- ▶ Reconstruction also entails safely “reenacting” a crime scene.





- ▶ The Purpose of Crime Scene Reconstruction:
- ▶ Bringing evidence together to potentially determine what happened.
- ▶ Uncover additional insight into an incident.

Frances Glessner Lee created “dollhouses” in the 1940s that depicted actual crime scenes to assist police in investigation.

https://garage.vice.com/en_us/article/qvjqxp/the-uncanny-crime-scene-models-of-frances-glessner-lee



- ▶ Crime scene reconstruction can be conducted in a variety of ways. This includes reconstructing an entire incident or only focusing on particular forensic disciplines. (such as blood spatter, trajectory, etc)

THE NUMBER ONE RULE OF RECONSTRUCTING CRIME SCENES IS TO STAY SAFE. YOU ARE SIMPLY PRETENDING WHEN YOU WORK ON RECONSTRUCTING A CRIME SCENE. THINK OF IT AS PUTTING ON A PLAY WITH YOUR CO-WORKERS.



- ▶ Supplies for reconstruction can be found already at your agency. Here are a few tools that you may need that you should already have access to:
- ▶ Trajectory rods.
- ▶ Neon string-also for trajectory purposes.
- ▶ Synthetic blood.
- ▶ Butcher paper.

MOST EVIDENCE SUPPLY COMPANIES SELL THESE ITEMS IF YOUR AGENCY DOES NOT ALREADY HAVE THEM. ALSO, FAKE BLOOD FOR COSTUME PURPOSES ALSO WORKS WELL FOR RECREATING BLOOD SPATTER PATTERNS.

- ▶ An “L” scale
- ▶ Evidence markers
- ▶ An alternative light source
- ▶ Synthetic blood
- ▶ Spent shell casings (that are NOT ACTUAL EVIDENCE)
- ▶ A Rollatape
- ▶ A camera



ADDITIONAL TOOLS YOU MAY NEED





- ▶ Quick tips for basic crime scene reconstruction:
- ▶ <https://www.youtube.com/watch?v=ePywkUA-cLE> (Credit: YouTube/CH-06: VIDHIK [Social Science - IV])
- ▶ https://www.youtube.com/watch?v=vg4aWZ_hp8 (Credit: YouTube/Knox & Associates, LLC)



WHERE DO YOU BEGIN WHEN YOU RECONSTRUCT A CRIME SCENE?

Step 1. Figure out what part of the incident you need to recreate.

Step 2. Make notes about what details you need to include in the reconstruction.

Step 3. Gather supplies.

Step 4. Set up the reconstruction by referring to crime scene photos.

See video for example.



- ▶ The purpose of reconstructing a crime scene is to “reenact” the events that took place in order to gain further insight into the case. Remember, evidence does not lie-it is physical and most of the time tangible. It can reveal a lot in your investigation.
- ▶ Begin by carefully setting up the scene as it appears in your crime scene photos. Try to recreate the events by using the end result and working backwards. (see video)

THE PURPOSE AND PROCESS OF RECONSTRUCTION



FORENSIC DISCIPLINES

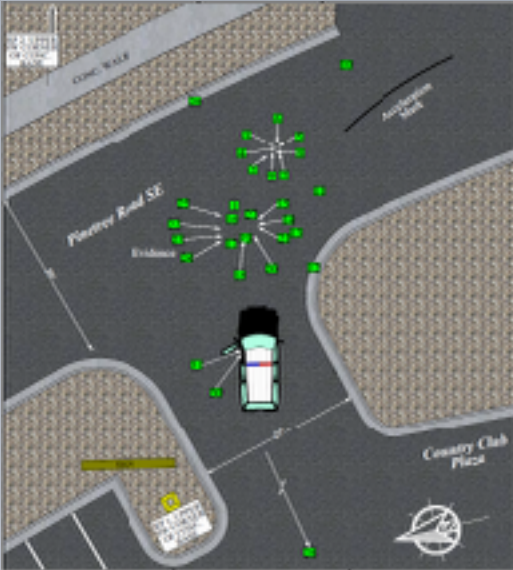
IT IS IMPORTANT TO RECREATE A DISCIPLINE OR TYPE OF EVIDENCE ACCURATELY YET SAFELY.

No matter what type of scene it is that you are reconstructing you must ensure that you are doing so safely. This means NO LOADED GUNS, (play it even safer and use training guns) no sharp objects, etc. Ensure that no one participating in the reconstruction will be hurt.



- ▶ Accuracy: make sure that the forensic discipline or type of evidence that you will be recreating remains as accurate as possible while still being safe.
- ▶ Details: Every detail in every crime scene is important. Make sure you include all details whether they seem relevant or not at the time.
- ▶ Please do not use actual evidence when reconstructing or recreating a crime scene. This will potentially contaminate evidence and it WILL ruin the chain of custody.

TIPS FOR RECONSTRUCTION



Crime scene reconstruction can also include 3D imaging.

The animation to the left is from an investigator who is with the New Mexico State Police.



THANK YOU FOR TAKING THE TIME TO
TAKE THIS CLASS!